

# PRESENCE MOBILE MOTORIZED XL



Even giants can move like butterflies

Stable and easy handling for the largest displays

The XL version of our unique design product. Attractive and elegant from all sides, the Presence Mobile Motorized XL looks great placed in the centre of the room. Perfect for large, heavy (up to 150 kg!) and touch sensitive displays, due to the very stable and patented design.

The motorised height adjustment is soft and quiet, readily available from a button at the side of the unit. Cables and peripherals are completely hidden inside.

Motorized height adjustment works for most markets (both 110 and 230V) and allows you to work ergonomically.

The display can be locked with the accompanying locking screw for personal safety, or with a padlock (not included), providing increased protection from theft.

The pre-factory assembly means that installation is easy and quick, while the hidden cable chain inside the product ensures that the cables run freely.

The design of the SMS Presence is, furthermore, protected.

Maximum display weight: 150 kg.

Finish: Aluminium/Anthracite grey.



## ARTICLE NUMBER

C5-31U007-2-C-0  
SMS Presence Mobile Motor XL

## INCLUDED PRODUCTS

SMS Presence Floorstand Mobile  
1 x C5-31U001-2-A-1  
SMS Presence Mobile Motor Body  
1 x C5-31U001-2-B-2  
SMS Presence Mobile Holder 150 1200x600  
EU  
1 x C5-11U007-2-C-3

## INFO

<b>PLACEMENT</b>	Mobile
<b>ROTATION</b>	Landscape
<b>MOTORIZED</b>	Yes
<b>MOBILE</b>	Yes
<b>LOCKABLE</b>	Yes
<b>HEIGHT ADJUSTABLE</b>	Yes
<b>HEIGHT ADJUSTABLE SPEC</b>	Stroke length 500mm
<b>CERTIFICATES</b>	CE
<b>VESA HORIZONTAL</b>	200 - 1200
<b>VESA VERTICAL</b>	100 - 600
<b>MAX WEIGHT [KG]</b>	150
<b>SCREEN SIZE</b>	max 84" (85-98" max 100kg)
<b>WARRANTY [YEARS]</b>	2

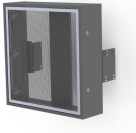
# ACCESSORIES



## **PRESENCE CAMERA SHELF**

PR100001

---



## **SMS PRESENCE TOWER BOX - WALL/FLOOR**

C5-21U004-2-A

## **SMS PRESENCE TOWER BOX - MOBILE**

C5-21U006-2-A

---



## **SMS PRESENCE MEDIA BOX - GLASS**

PR400001

## **SMS PRESENCE MEDIA BOX - PERFORATED**

PR400003